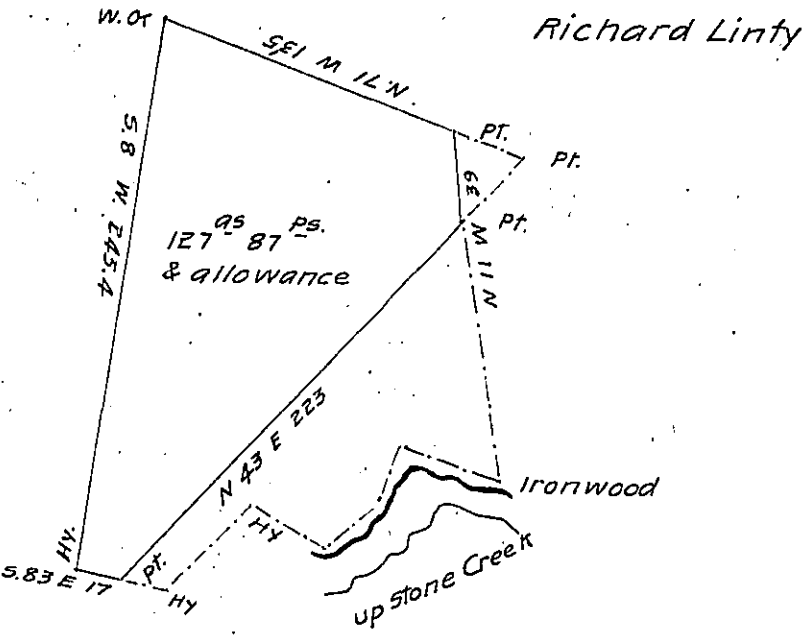


John Curry now  
John Covenhoven



Richard Linty

Situate in Barree Township Huntingdon County Containing One Hundred  
& Twenty seven acres Eighty seven perches and allowance - Being part of a Tract  
of land surveyed to Hugh Mitchell on an Order of Survey dated Oct 11th 1766  
which Survey was said to contain 180.9 acres & allowance - The above part resur-  
veyed and divided from the Original the 1st day of August 1830 by Wm Reed  
Esq! then Deputy Surveyor - Examined for returning Nov 21st 1838.

Jacob Cresswell D.S.

Jr<sup>o</sup> Taylor Esq.

Surveyor General.

No 1510.

IN TESTIMONY that the above is a copy of the original remaining on file in  
the Department of Internal Affairs of Pennsylvania, made  
conformably to an Act of Assembly approved the 16th day of  
February, 1833, I have hereunto set my Hand and caused  
the Seal of said Department to be affixed at Harrisburg,  
this twenty seventh day of May 1904.

*George B. Brown*  
Secretary of Internal Affairs.